

# SPEC SHEET + MEASUREMENTS

**SPORT-TEK**

## Sport-Tek® Sport-Wick® Stretch Contrast 1/4-Zip Pullover. ST854

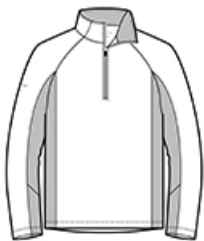
### Product photo



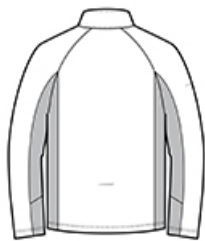
By mixing heather with a solid color and adding reflective hits, this moisture-wicking pullover has a technical look plus plenty of stretch for easy movement.

- 6.8-ounce, 90/10 poly/spandex jersey
- Soft-brushed backing
- Tag-free label
- Reflective details on right sleeve and lower back
- Cadet collar
- Reverse coil zipper
- Raglan sleeves
- Open cuffs and hem

### Sketches



front



back

# SPEC SHEET + MEASUREMENTS

**SPORT-TEK**

Sport-Tek<sup>®</sup> Sport-Wick<sup>®</sup> Stretch Contrast 1/4-Zip Pullover.  
ST854

## PRODUCT MEASUREMENTS

|                     | XS     | S      | M      | L      | XL     | 2XL    | 3XL    | 4XL    |
|---------------------|--------|--------|--------|--------|--------|--------|--------|--------|
| Chest               | 20     | 21 1/2 | 23     | 24 1/2 | 26     | 27 1/2 | 29 1/2 | 31 1/2 |
| Body Length at Back | 27 1/2 | 28 1/2 | 29 1/2 | 30 1/2 | 31 1/2 | 32 1/2 | 33     | 33 1/2 |
| Sleeve Length       | 33 3/4 | 34 1/2 | 35 1/4 | 36     | 36 3/4 | 37 1/2 | 38 1/4 | 39     |

**Chest:** Measured across the chest one inch below armhole when laid flat.

**Body Length at Back:** Measured from high point shoulder to finished hem at back.

**Sleeve Length:** Start at center of neck and measure down shoulder, down sleeve to hem.

## SIZE CHARTS

|       | XS    | S     | M     | L     | XL    | 2XL   | 3XL   | 4XL   |
|-------|-------|-------|-------|-------|-------|-------|-------|-------|
| Chest | 32-34 | 35-37 | 38-40 | 41-43 | 44-46 | 47-49 | 50-53 | 54-57 |

## HOW TO MEASURE



### CHEST

Measure under the arm and around the fullest part of the chest with arms down, keeping tape horizontal.

# SPEC SHEET + MEASUREMENTS



Sport-Tek® Sport-Wick® Stretch Contrast 1/4-Zip Pullover.  
ST854

## COLORS

---



Black/  
Charcoal Grey  
Heather  
PMS 426 C



Charcoal  
Grey/  
Charcoal Grey  
Heather  
PMS 7540 C



True Navy/  
True Navy  
Heather  
PMS 533 C